

# Mouse Monoclonal Antibody to MCAM

## Order Information

Catalog#	30505	
Size/Concentration	100µl	50µl
Price(¥)	2180	1280

## Description

The protein encoded by this gene plays a role in cell adhesion, and in cohesion of the endothelial monolayer at intercellular junctions in vascular tissue. Its expression may allow melanoma cells to interact with cellular elements of the vascular system, thereby enhancing hematogenous tumor spread. Could be an adhesion molecule active in neural crest cells during embryonic development. Acts as surface receptor that triggers tyrosine phosphorylation of FYN and PTK2/FAK1, and a transient increase in the intracellular calcium concentration.

## Specification

Aliases : CD146; MUC18

Entrez GeneID : 4162

Swissprot : P43121

clone : 6C3E6

WB Predicted band size : 71.6kDa

Host/Isotype : Mouse IgG1

Storage : Store at 4°C short term. Aliquot and store at -20°C long term. Avoid freeze/thaw cycles.

Species Reactivity : Human

Immunogen : Purified recombinant fragment of human MCAM (AA: 84-189) expressed in E. Coli.

Formulation : Purified antibody in PBS with 0.05% sodium azide

## Application

WB	1/500 - 1/2000
IHC	1/200 - 1/1000
FCM	1/200 - 1/400
ELISA	1/10000

## References

1. Cancer Lett. 2013 Apr 28;330(2):150-62.
2. J Biol Chem. 2013 Jan 25;288(4):2571-9.

Call 1-510-860-4615

+86-19375157864

Email [Info@ProMab.com](mailto:Info@ProMab.com)

Web [www.ProMab.com](http://www.ProMab.com)

[www.ProMab.cn](http://www.ProMab.cn)

## Protocol

WB - [www.promab.com/protocol/wb.html](http://www.promab.com/protocol/wb.html)

IHC - [www.promab.com/protocol/ihc.html](http://www.promab.com/protocol/ihc.html)

ICC - [www.promab.com/protocol/icc.html](http://www.promab.com/protocol/icc.html)

HCM - [www.promab.com/protocol/hcm.html](http://www.promab.com/protocol/hcm.html)

**Antigen Sequence** is available upon request.

## Products and Services

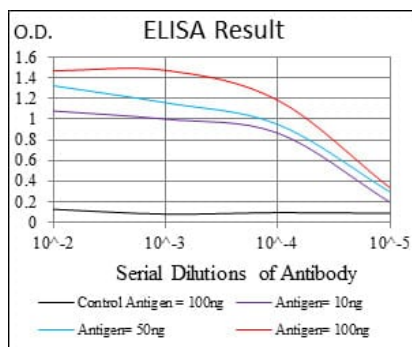
- Mouse Monoclonal Antibody
- Rat Monoclonal Antibody
- Human Antibody
- Hybridoma Sequencing
- Polyclonal Antibody

**For Research Only**

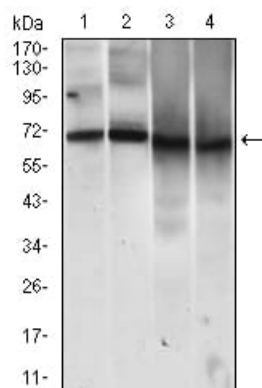
**Application Key:** WB - Western Blot | IHC - Immunohistochemistry | ICC - Immunocytochemistry | FCM - Flow Cytometry | ELISA - Enzyme-linked Immunosorbent Assay | IP - Immunoprecipitation

# #30505

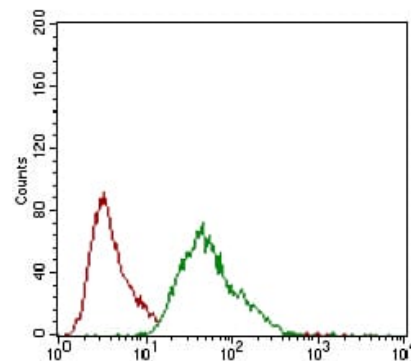
# Mouse Monoclonal Antibody to MCAM



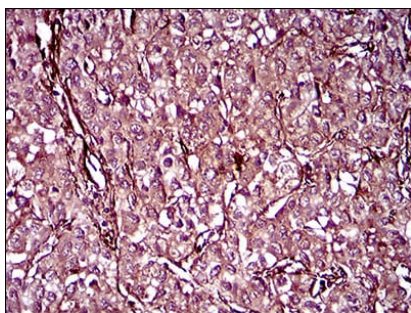
Black line: Control Antigen (100 ng); Purple line: Antigen(10ng); Blue line: Antigen (50 ng); Red line: Antigen (100 ng);



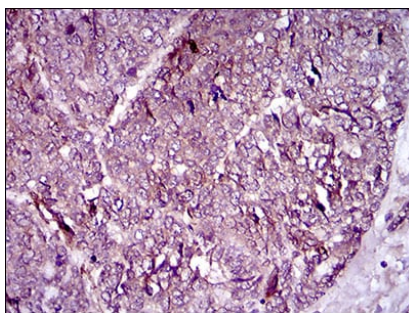
Western blot analysis using MCAM mouse mAb against HUVE-12 (1), EVC-304 (2), HELA (3) and MCF-7 (4) cell lysate.



Flow cytometric analysis of MCF-7 cells using MCAM mouse mAb (green) and negative control (red).



Immunohistochemical analysis of paraffin-embedded human liver cancer tissues using MCAM mouse mAb with DAB staining.



Immunohistochemical analysis of paraffin-embedded human esophageal cancer tissues using MCAM mouse mAb with DAB staining.

**For Research Only**

**Application Key:** WB - Western Blot | IHC - Immunohistochemistry | ICC - Immunocytochemistry | FCM - Flow Cytometry | ELISA - Enzyme-linked Immunosorbent Assay | IP - Immunoprecipitation

#30505